

ANNEXURE 7

Annual Report on Corporate Social Responsibility

1. CORPORATE SOCIAL RESPONSIBILITY AT STRIDES ARCOLAB

Strides' Corporate Social Responsibility (CSR) initiatives goes beyond compliance and creates sustainable value for communities by improving their health, education, and employability. The policy encompasses our philosophy towards CSR and lays down the guidelines and mechanism for undertaking socially useful programs for welfare and sustainable development of the community at large.

The policy comprises of the Vision and Mission Statement, objectives and our philosophy. It also explains the governance structure along with the clarity on each one's roles and responsibilities.

Strides assessed the needs in stakeholder community through an extensive assessment and has prioritised the causes that it will support in the current phase of the CSR journey, on the basis of this assessment.

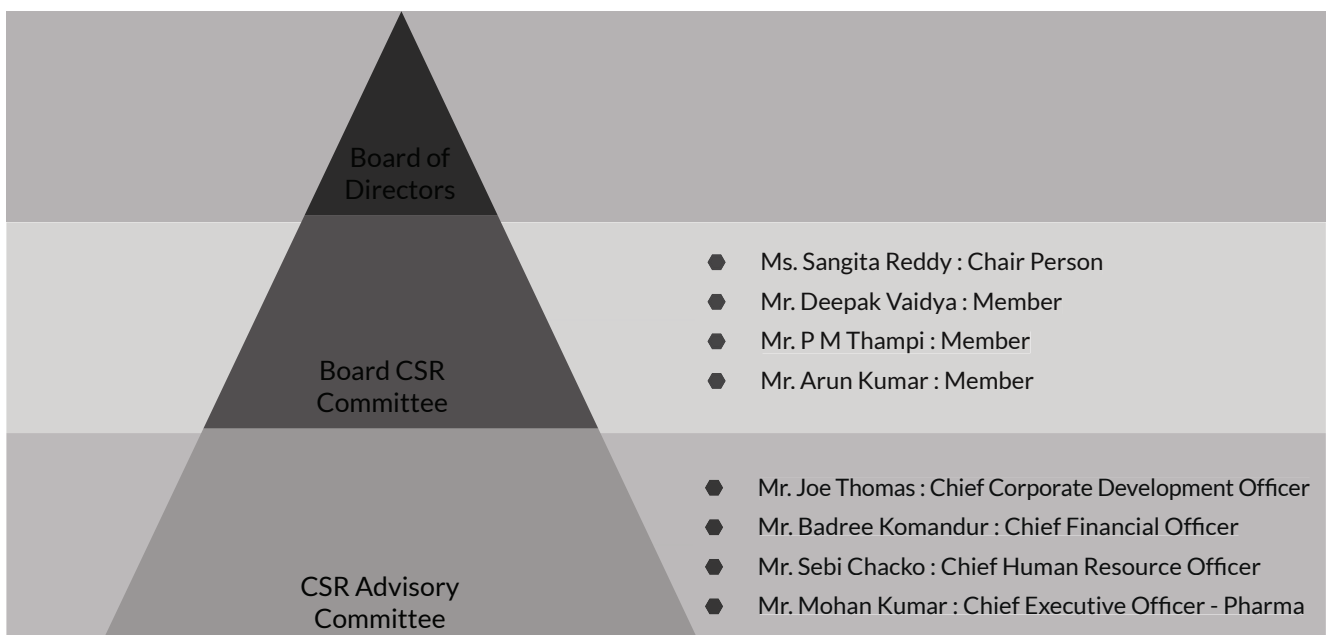
Strides proposes to continue investing in some of its existing CSR initiatives and plans to initiate new programs as deemed necessary. Such programs, both existing and the new ones, could be scaled up in future. Some of the areas we propose to invest our CSR budget includes:

1. Health & Hygiene
2. Education
3. Employability

Strides is committed to undertake implementation of the proposed CSR programs in order to bring meaningful and sustainable change to the local communities in which it operates. We will leave no stone unturned in ensuring that it contributes to the society, which is an integral stakeholder for us.

For more information please refer CSR policy at: http://stridesarco.com/pdf/2014/Strides_CSR_Policy_Oct_2014.pdf

2. THE CSR GOVERNANCE STRUCTURE AND ITS TEAM MEMBERS ARE:



ANNEXURE 7

3. Average net profit of the company for last three financial years is ₹ 936.80 Million
4. The prescribed CSR Expenditure, which is two per cent of the amount mentioned in item 3 above, is ₹ 18.74 Million for the financial year 2014-15

5. DETAILS OF CSR SPENT DURING THE FINANCIAL YEAR:

#	Particulars	Amount (₹ Million)
1	Prescribed CSR expenditure for the year under review	18.74
2	Total spent during the year under review	19.41
3	Amount unspent, if any	NIL

6. MANNER IN WHICH THE AMOUNT SPENT DURING THE FINANCIAL YEAR

Sl. No.	CSR project or activity identified	Sector in which the project is covered	Location/ Area where the Project/ Program was undertaken	Amount outlay (₹)	Amount spent on the projects or programs (₹)		Cumulative expenditure upto the period under review (₹)	Amount spent: Direct or through implementing agency
					Direct Expenditure	Overheads		
1	Infrastructure Improvement at Schools	Education	Haragadde Government School and Gottigere Government School, Bengaluru District, Karnataka State	1,934,000	1,934,000	-	1,934,000	Strides Foundation through Pragathi Construction, People Pro & Pioneer solutions
2	Leaps program	Education	Haragadde Government School and Gottigere Government School, Bengaluru District, Karnataka State	1,100,000	744,000	-	744,000	Strides Foundation through People Pro
3	Sponsorship / support - Extl	Education	Dream school and Residential facility - M Hosahalli, Bagalore-Bhuthagiri road, Karnataka Centre for Social Initiatives & Management (CSIM) - Training - Bengaluru - Karnataka Shri Gururathna Vipra Kshema Trust (SGVK) - Training - Bengaluru - Karnataka	4,240,000	3,180,750	-	3,180,750	Strides Foundation through CISM, Reaching Hand, SGVK Trust
4	Primary Health Centre - Arogyadhama	Health	Honnakalaspura, Suragajakkanahalli Panchayat, Anekal taluk, Bengaluru District, Karnataka State	9,450,000	9,450,000	-	9,450,000	Strides Foundation through Karuna Trust
5	UGD & Septic Tank with up flow Filters	Health & Hygiene	Suragajakkanahalli Panchayat, Anekal taluk, Bengaluru District, Karnataka State	4,100,000	4,100,000	-	4,100,000	Strides Foundation through EssVee Designs
Total				20,824,000	19,408,750	-	19,408,750	

7. BRIEF ON THE PROJECTS TAKEN UP DURING THE YEAR UNDER REVIEW:
I. Primary Health Centre:

With inputs from our NGO partners to address preventive health care needs at Suragajakkanahalli, we built a modern state of the art Primary Health Centre (PHC) - Arogyadhama. The PHC is equipped with ultra-modern equipment like X-ray, Scan, laboratory and minor OT. Along with out-patient facilities, it has facilities in Ophthalmology, Gynaecology, Paediatrics, Dental Treatments, Pharmacy and day care facilities. The facility was inaugurated on 25th March and currently about

680 patients are being treated every month. The "Arogyadhama" will take care of the health related matters in the surrounding 10 villages and approx. population of 10,000.

II. UGD & Septic Tank with up flow filters:

With our continued focus on health and hygiene, we have built an Under-ground Drainage system (UGD) and a Septic Tank with up flow filters at Suragajakkanahalli. This system will positively impact the health, hygiene and sanitation of more than 2,000 people staying in this village and is expected to take care of the UGD needs of the village for the next 10+ years.

ANNEXURE 7

III. LEAPS - Parivarthan:

Leadership Adoption Program for Schools (LeAPS) a program designed in partnership with People Pro targets Govt. Schools and aims to help and motivate students to visualize their goals & achieve them. Through this program, students are taught skills ranging from discipline, confidence and self-belief to social etiquette and creative careers. In the year 2014 - 15, 620 students benefitted from this program.

IV. Infrastructure Improvement at Schools:

Continuing our focus on Education, we also worked towards infrastructural improvement at the Government Schools in Haragadde and Gottigere. For the school at Haragadde, we constructed two classrooms and toilets. In Gottigere, we are building toilets for girls and renovate other infrastructures. We also have made provision for safe drinking water and appointed teachers for Science, English and Mathematics at both the schools.

V. Health Camps:

With an aim to focus on good health for school going children, we conducted a Health Camp at our adopted Govt. schools in Gottigere and Haragadde. Volunteers from the organisation along with specialist doctors screened children for anaemia, malnutrition and general health condition. In this Health Camp, more than 450 students were subjected to go through various medical tests like Respiratory tests, Hook-worm infestation, Muscular Skeletal test, Learning Abnormalities and Anaemia detection.

VI. Clean Drive:

Clean Drive, the CSR initiative also marked the launch of our Silver Jubilee Celebrations. With an objective to provide clean environment, we launched the Clean Drive initiative at Anekal town, Govt. Schools in Haragadde and Gottigere. This was one of our major employee volunteering initiative where about 450 employees of Strides participated. The volunteers cleaned the roads, office premises, school premises, classrooms, toilets and also painted the compound walls.

VII. Sponsorships and External Support:

At Strides, we also extend sponsorship and support to external organisations. Strides Foundation has contributed significantly to the Centre for Social initiative and Management (CSIM) in order

to support, handhold and mentor students with innovative ideas. This sponsorship will also help them in introducing a certificate program in Social Enterprise Management. We have also extended our support to "Reaching Hand", a charitable trust working towards empowering destitute women and children in leading a life of self-worth and dignity. The support extended will help them build a school and a dream home for the children.

We are committed to provide sustainable development in the community by bringing together meaningful initiatives which will help develop the society.

8. IMPLEMENTATION AGENCIES

Strides Foundation

Strides Foundation is the force behind the organization's focus on Corporate Social Responsibility. The trust, the organization and our NGO partners collaborate in conceptualizing and implementing various programs. We value our partnership with the NGOs as this not only will help deliver what we want, but will also be able to help get expert guidance and suggestions in improving our current community events.

Strides Foundation is a Trust set up by the Promoters of the Company as a not-for-profit organisation. The Trust is managed by 8 Trustees and the Trustees are part of the management team. The Managing Trustee is responsible for day-to-day administration of the Trust under the guidance of the Board.

The Company implements its CSR activities through the Strides Foundation.

The role of Strides Foundation includes:

- Helping conceptualize the programs that the Company intends to support.
- Executing the programs through Strides employees or in collaboration with other partners such as NGOs, the government, community based organizations, sector experts and any other partners, as are deemed necessary.
- Collecting and analysing data for monitoring and reporting of all programs.
- Providing capacity building support to the program team.
- Providing periodic reports to the CSR Committee.

ANNEXURE 7

During the year under review Strides Foundation has worked with the following agencies to implement the CSR activities of the Company:

a) Karuna Trust

Karuna Trust (India) is public charitable trust involved with integrated rural development and is affiliated to Vivekananda Girijana Kalyana Kendra. It was started in the year 1986 by Dr. H. Sudarshan, a well-known social worker and tribal activist recognized (Padmashri) for his work with the Soligas in BR Hills. Karuna Trust has pioneered and implemented a successful Public-Private-Partnership model that helps leverage the government's significant investment in public health care infrastructure by complementing it with a socially committed, not-for-profit management team. The Trust runs 72 Primary Health Care (PHC) Centres in Karnataka and Arunachal Pradesh. The uniqueness of the project lies in its community-oriented focus that integrates preventive, promotive, curative and rehabilitative efforts through a democratic, cultural and participatory approach.

The construction and maintenance of Strides "Arogyadhama" was assigned to Karuna Trust.

b) People Pro

PeoplePro Trainers and Consultants Pvt. Ltd (formerly SmartKids), was started in October 2000 and is headquartered in Bengaluru. PeoplePro was initially started to meet the growing need of leadership training in schools. Today PeoplePro has diversified to train up various other People-groups like Parents, teachers and Colleges and Corporate programs. People pro has partnered with us in Leaps Program, Volunteering Activities, analysing the requirements at Government Schools and providing the teaching staff at our adopted Government schools.

c) Pragathi Constructions

Pragathi Constructions, started in 2008, are into construction of industries, majorly Pharma and Engineering industries construction. On the social

front partnered with Tata chemicals, Round table Bengaluru 1 in building schools. Pragathi partnered with us in building the infrastructure at Schools.

d) Essvee Designs

Started in 2013, majorly handling turn key projects for Sewage Treatment Plants (STP) and also into construction of high raise buildings and industries. EssVee designs partnered with us in building the Under Ground Drainage (UGD) and Septic Tank with up flow filters.

e) Centre for Social Initiatives and Management (CSIM)

CSIM Bengaluru organizes awareness events with the objective of triggering social consciousness among diverse citizen groups. Students of the SEO Program generally take the lead in organizing events which showcase exemplary work being done by Social Entrepreneurs and opportunities in the social sector. Strides extended sponsorship to CSIM for training Social Entrepreneurs and to support, handhold and mentor students with innovative ideas.

f) Reaching Hand

Reaching Hand is a charitable organization ushering holistic transformation in economically and socially challenged individuals, thus impacting communities. The mission of the organization is divided into three folds: 1. Build the lives of children at risk by providing them quality education, basic need and safe shelter, 2. Care for the sick and broken hearted by giving them best healthcare facilities, 3. Serve the helpless and neglected children, youth and women by equipping their skills and by creating opportunities for livelihood development. Strides extended sponsorship to Reaching Hand to help build a home for the 100 destitute children

9. The Chairperson of the CSR Committee has given a responsibility statement on behalf of the of the CSR committee that the implementation and monitoring of CSR Policy, is in compliance with CSR objectives and policy of the company